



# WHAT ELSE IS NEW

**A SOLO SHOW OF NEW WORK  
BY ADAM MCLEVEY**



# WHAT ELSE IS NEW



# ABOUT THE COLLECTION

In *What Else Is New*, Adam Mclevey revisits some of his favourite pieces from his back catalogue. The work shown here is an expression of the way his style has changed over the years. Experimenting with materials and methods, the pieces approach the past in various ways.

Some pieces have been created by going back to old photographs; others have been reinterpreted with new imagery that aims to give the viewer the same feel available in an earlier piece.

The collection as a whole offers a brief glimpse into the artistic pleasures and preoccupations of Mclevey's career.

*What Else Is New* originally ran as a solo show at Toto's Wine Bar in Bristol. The waterfront venue played host to the exhibition from 13 May through 3 June.

# **DON'T BLINK**

24 inches by 36 inches

Acrylic and spray paint on canvas

***£610***

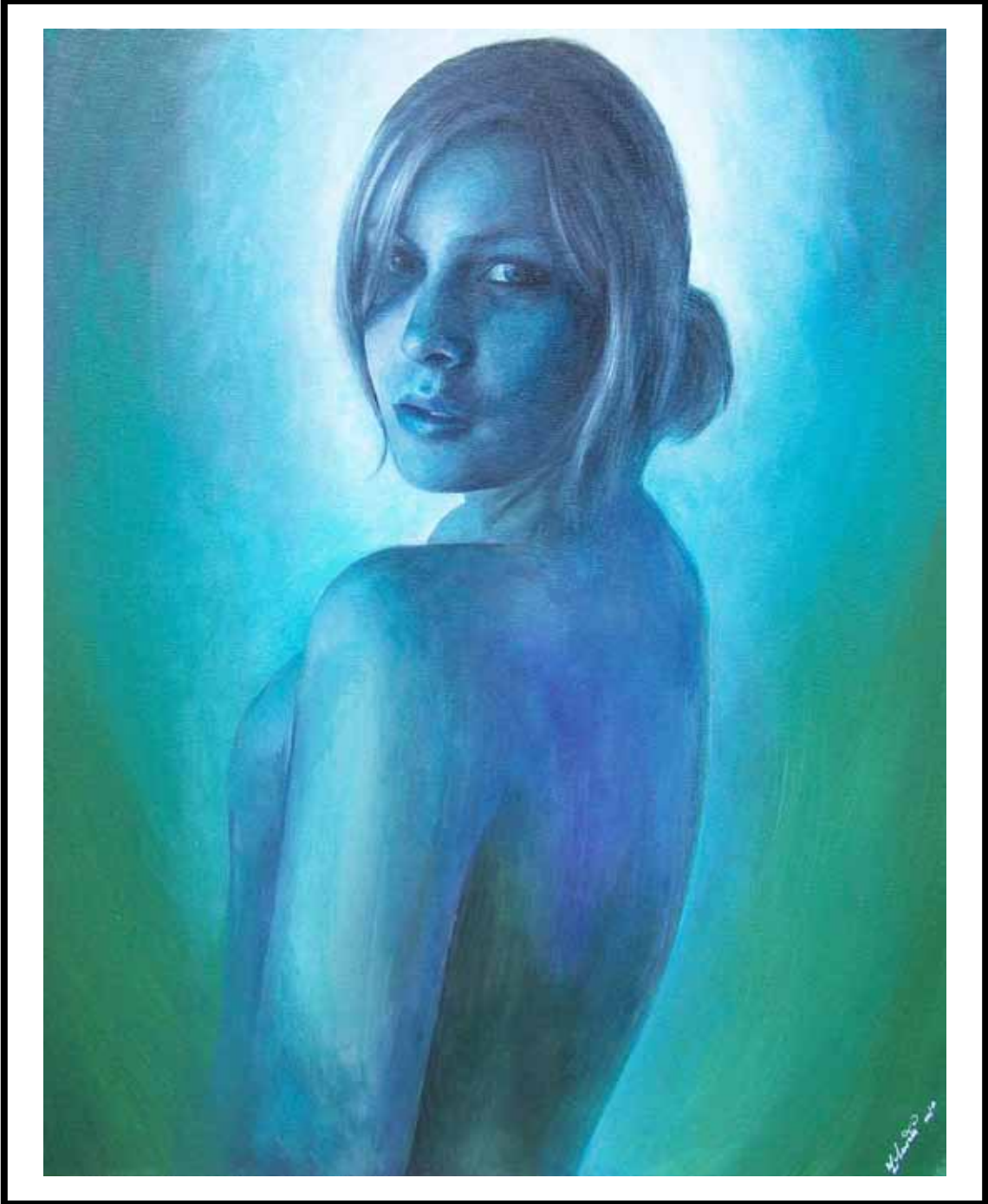


# **FAITHFUL**

20 inches by 16 inches

Acrylic on canvas

***£375***



# **CHECK**

24 inches by 36 inches

Acrylic and spray paint on canvas

***£640***



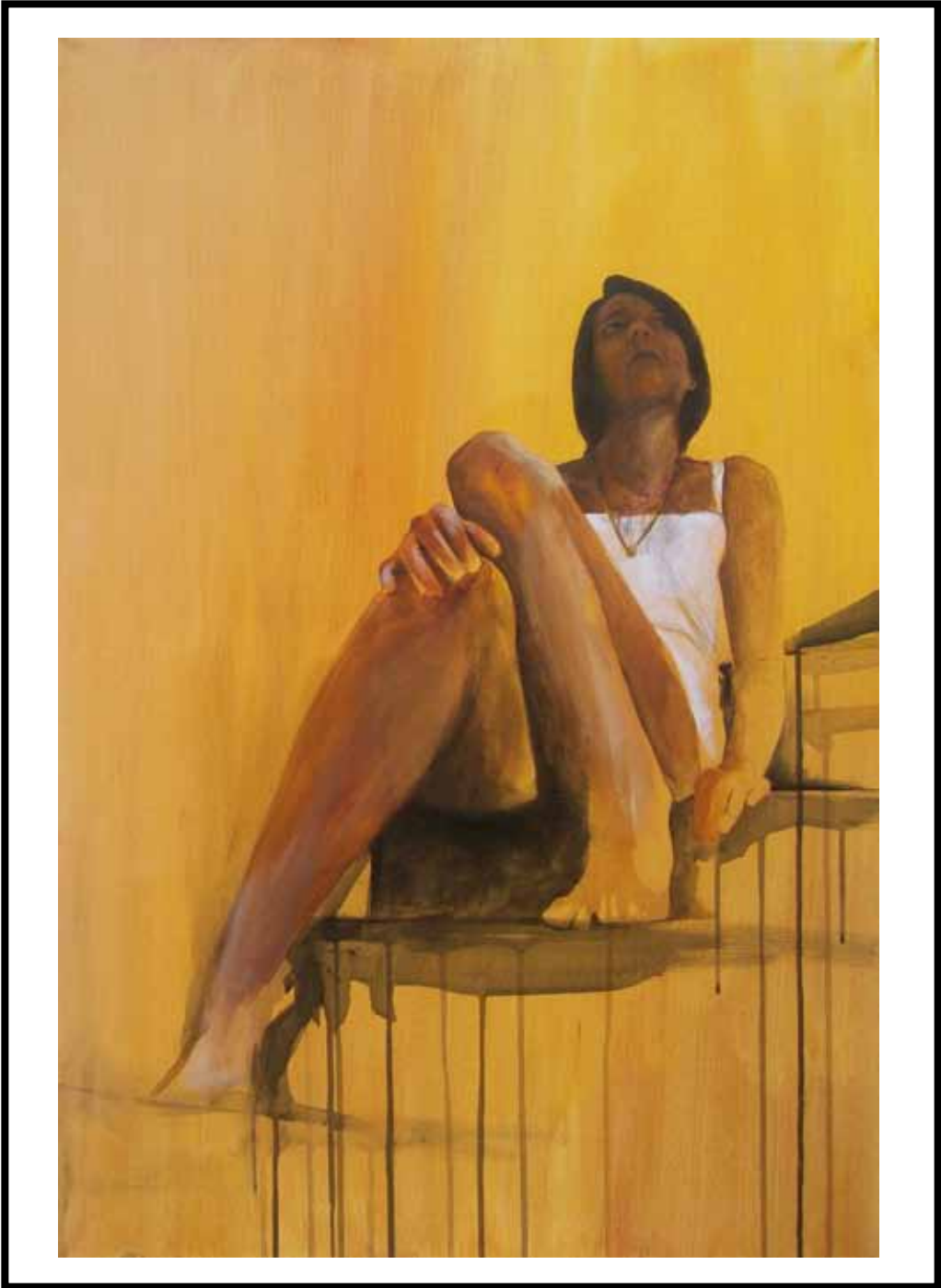


# **JESS**

36 inches by 24 inches

Acrylic on canvas

***£550***

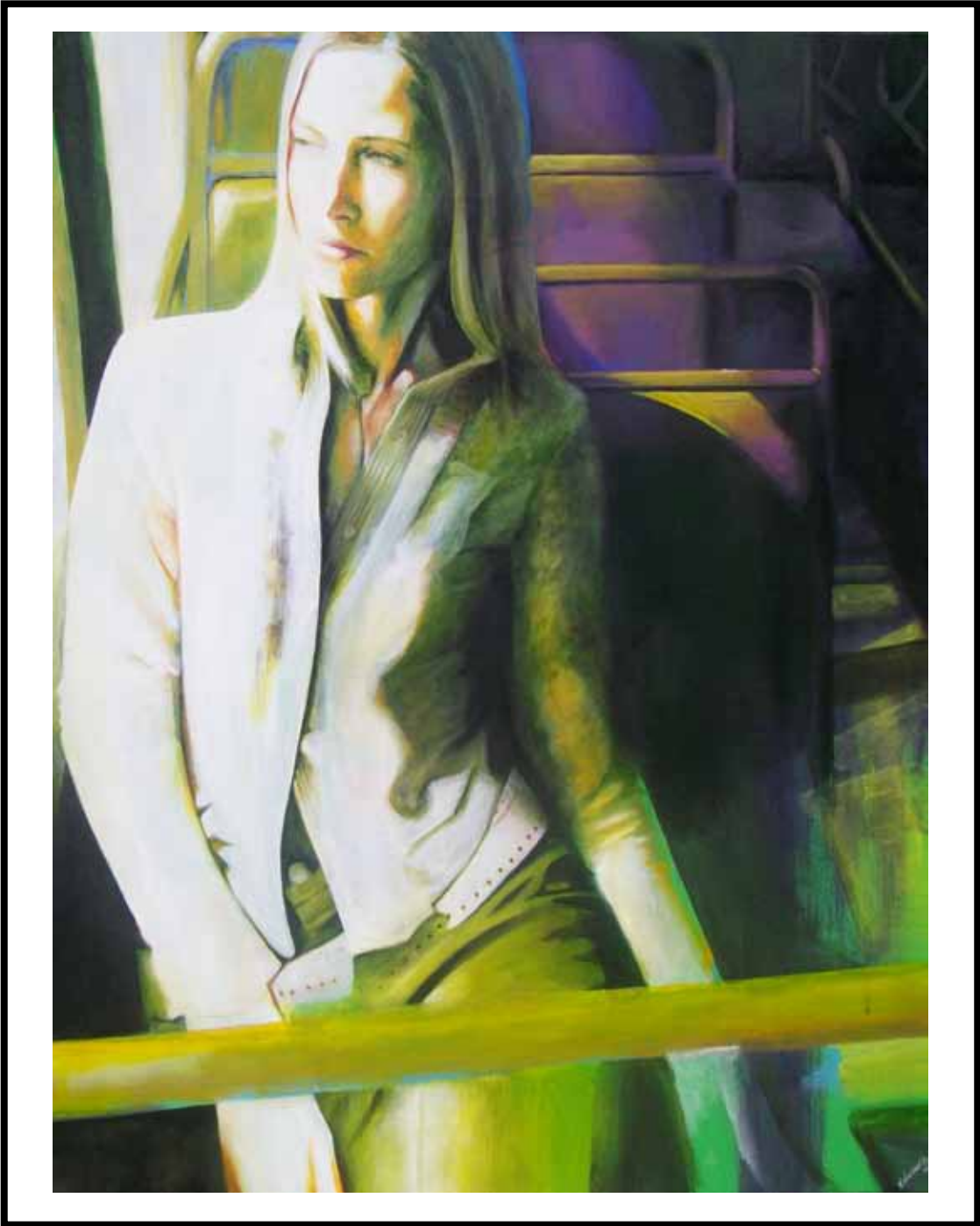


# **HALF A PERSON**

40 inches by 30 inches

Acrylic and spray paint on canvas

***£740***

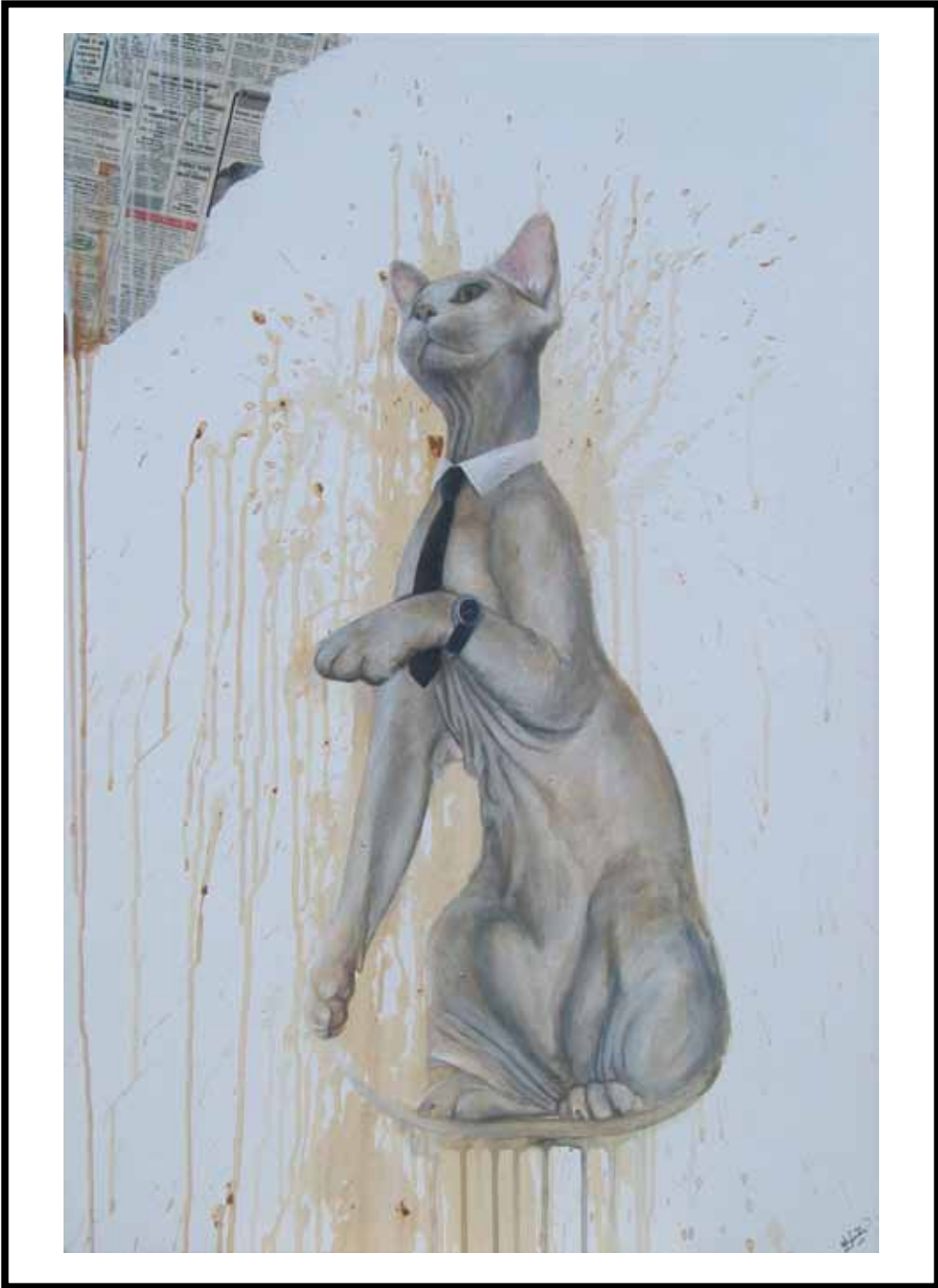


# **TICK TOCK**

Dptych, 24 inches by 36 inches each

Acrylic and newsprint on canvas

***£970***



# **TICK TOCK**

Dptych, 24 inches by 36 inches each

Acrylic and newsprint on canvas

***£970***





# **WRECKED**

24 inches by 36 inches each

Acrylic and spray paint on canvas

***£970***



# WHAT ELSE IS NEW



# PURCHASING INFORMATION

All pieces are available as originals and as limited edition prints.

Original canvases are priced as marked.

Each canvas is also available as a limited edition giclee print. Prints will have a finished size of approximately 16 inches by 23 inches, including borders. They will be signed and numbered out of 20.

All prints are available for £50 each.

All pieces can be reserved with a £50 deposit. Payment in full is required prior to delivery.

Purchases can be made by cash, bank transfer, or by credit card via PayPal (PayPal orders subject to small fee). Delivery charges will apply based on location.

If you have any questions or would like to make a purchase, please email [sales@mclevey.com](mailto:sales@mclevey.com)

# WHAT ELSE IS NEW



# ABOUT THE ARTIST

**Adam Mclevey** (British, b 1976) is a professional artist based in Weston-super-Mare. His work combines fine art detailing with a bold graffiti-influenced aesthetic.

Mclevey has exhibited his work internationally in solo and group shows, and has done live painting at a number of UK events. He received press coverage around the globe when his painting, 'Typo', was hung as part of Banksy v. Bristol Museum exhibit (Bristol, 2009).

Under his 'MCL' brand, Mclevey has created a series of characters, called 'Steves', who interact with the world around them in often humorous ways. The Steves gained popularity amongst collectors of Mclevey's work during his 'One Pound, One Stamp' card project, in which over 450 cards were hand-painted by the artist.

What Else Is New marked the start of his 2010 exhibitions, and his second solo show in Bristol.

Mclevey's work can be seen at [www.mclevey.com](http://www.mclevey.com)



[WWW.MCLEVEY.COM](http://WWW.MCLEVEY.COM)

