

# DRIFTWOOD

a new collection of works by

Adam McLevey



1. Acrylic, wax, newsprint, and emulsion  
on found wood (laminated chipboard)

18 inches by 15 inches







2. Acrylic and emulsion on found wood (laminated chipboard)

15 inches by 33 inches





3. Acrylic and emulsion on found wood (laminated chipboard).  
Sold with driftwood framing (sides only).

31 inches by 15 inches (33.5 inches by 17 inches, including framing)







4. Acrylic and emulsion on found wood (laminated chipboard). Sold with driftwood framing (corner only).

15 inches by 29 inches (17.5 inches by 31 inches, including framing)







5. Acrylic, wax, and emulsion on found wood (laminated chipboard).  
Sold with driftwood framing (corner only).

45.5 inches by 15 inches (46 inches by 16 inches, including framing)







6. Acrylic and emulsion on found wood (laminated chipboard). Sold with driftwood framing (sides only).

15 inches by 26 inches (17 inches by 26.5 inches, including framing)







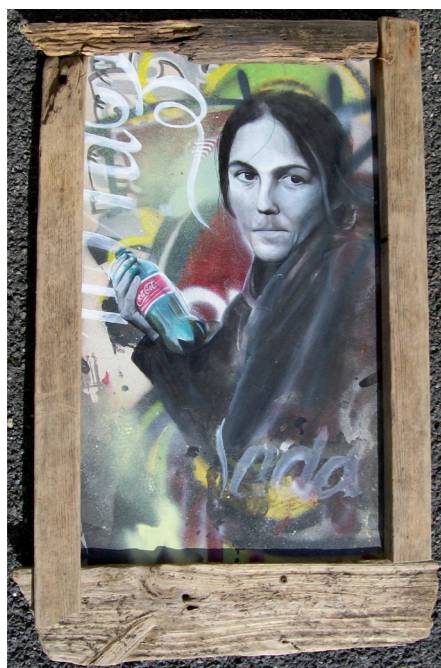
7. Acrylic and emulsion on found wood  
(fibreboard)

30 inches by 9.5 inches



8. Acrylic, spray paint, and emulsion  
on found wood (fibreboard).  
Sold with driftwood framing.

24 inches by 15 inches  
(27.5 inches by 18 inches, including framing)





# Price list

1.		£100
2.		£100
3.		£120
4.		£90
5.		£100
6.		£90
7.		£80
8.		£110

For sales enquiries  
and purchases, contact:

Jen Barnett / Mclevey Art

[jen@mclevey.com](mailto:jen@mclevey.com)

07952 101 524



# About Driftwood

BRISTOL -- Artist Adam Mclevey will be launching his first Bristol solo show this Saturday, 10 October, at the Golden Lion Pub (244 Gloucester Rd., Bristol, BS7 8NZ). The show, *Driftwood*, is a new collection of work utilising found materials.

Stylistically, it marks a return to Mclevey's twist on fine art after a summer season spent primarily working at live painting and graffiti events.

'The work I did this summer really influenced how I approached these pieces. I'm working much faster and looser with this collection. It captures the immediacy of some of my street work, but it's been great going back to using brushes and working in the studio.'

The concept behind *Driftwood* is combining portraits of homelessness with found materials, such as old and broken wood. Mclevey has given pieces texture through thick emulsion bases, dripped wax, torn newspaper, and other household detritus.

'All of the materials in these pieces echo the people in the portraits. Everything is stuff that's been cast off from a house. They're all the remnants of living someplace, the bits that get chucked out before a house gets scrubbed down for a happy new family to move in.'

Mclevey's collection of work showcases his technical ability and his skill at putting the subject's emotion into the images. The pieces also highlight Mclevey's memory-influenced style, where portions are highly detailed but other portions left unfinished. His work is the image you carry with you, after passing a person on the street. It is the eyes, the feeling, the compassion, the fear.

Driftwood runs through 6 November.

